

# Compound leverage snips



Simply better.

## D39 Next generation snip

With the new and innovative D39ASS, BESSEY® is bringing an entirely new generation of compound leverage cutting snips to the market for the sheet metalworking industry. These snips enable more capacity, precision and comfort with easier operation as a result of innovative design and unique construction elements.

### 1 Easier to hold

The new D39ASS snips enjoy an optimised handle angle that allows one to comfortably grip the entire unit for maximum application of cutting force.

### 2 Smooth cutting action

The joint area includes a sintered steel insert. This clever addition greatly reduces friction where it counts! Great for extending the tool life and for an exceptionally smooth cutting action.

### 3 Convenient latch

A central latch on the top of the handle allows right and left-handed users to open and close the snips with ease, without a change in grip.

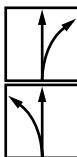
### 4 Cut straight, cut round, cut easier

The compact forged jaws permit high-precision cutting of curves while also being very effective at straight cuts – while the shape of the forged jaw allows work to flow past the user's hand instead of towards for sustained (...and safer) cutting.



## Multi-use aviation snip, D39ASS

- For continuous straight and curved cuts.
- Extremely compact cutter head with partially countersunk head screw connection for increased manoeuvrability and precision on curved cuts.
- Joint area screw connection with stud bolt, sintered disc and maintenance-free spring for extreme robustness.
- Reduced handle opening for optimised handling and an even cutting length.



	Overall Length	Blade Length	Cutting Capacity (carbon steel)	Approx. Weight
D39ASS-SB	9 3/16"	1 5/16"	18 gauge	1.15 lbs
D39ASSL-SB	9 3/16"	1 5/16"	18 gauge	1.15 lbs



# Compound leverage snips



Simply better.

## D15A Compact aviation snip

Smaller than the typical aviation snip – for working in small spaces – with all the power you need. Extremely small forged heads have optimized blade geometry and fine-tuned cutting leverage in a much smaller overall length. Fits well in a pocket, a tool pouch or tool box. Small, strong, and manoeuvrable.

### 1 100% Power, 75% size

The D15A Compact Aviation Snip has all the power of a full size aviation snip, and is 25% smaller.

### 2 Extremely compact cutting head

Extremely compact cutting head for great manoeuvrability, cutting the narrowest radii. The head geometry allows the surface being cut to slide past beneath your fingers to reduce the chance of injury.

### 3 Practical locking mechanism

The practical locking mechanism allows for opening and closing with one hand.

### 4 Compound leverage

Compound leverage considerably reduces the effort required. Improve productivity, reduce fatigue.

### 5 Ergonomic handle

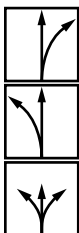
Ergonomic soft grip handles keeps hand from slipping.



## Multi-use snip, compact aviation snip, D15A

- Compact design for high performance with minimum effort.
- Smaller than typical aviation snip – for working in small spaces with all the power you need.
- For long continuous, straight and curved cuts.

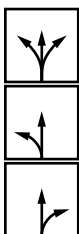
	Overall Length	Blade Length	Cutting Capacity (carbon steel)	Approx. Weight
D15A-BE	7 3/16"	1"	18 gauge	0.44 lbs
D15AL-BE	7 3/16"	1"	18 gauge	0.44 lbs
D15S-BE	7 3/16"	1 1/8"	18 gauge	0.44 lbs
D15-SET	1x D15S-BE, 1x D15A-BE, 1x D15AL-BE in a nylon pouch			



## Aviation snips, D16

- High grade steel cutting blades with micro-serrations for slip proof cutting.
- HRC up to 59.

	Overall Length	Blade Length	Cutting Capacity (carbon steel)	Approx. Weight
D16S	9 1/2"	1 3/4"	18 gauge	1.25 lbs
D16L	9 1/2"	1 9/16"	18 gauge	1.25 lbs
D16	9 1/2"	1 9/16"	18 gauge	1.25 lbs
D16-SET	1 x D16S, 1 x D16L, 1 x D16 in a nylon pouch			





# Compound leverage snips

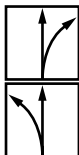


Simply better.

## Offset snips, optimized, D29ASS-2

- High grade steel cutting blades with compact cutting head for high manoeuvrability.
- Use 25% less effort with the optimized leverage.
- Right or left cutting versions available. HRC up to 61.

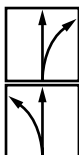
	Overall Length	Blade Length	Cutting Capacity (carbon steel)	Approx. Weight
D29ASS-2	10 1/4"	1 7/8"	18 gauge	1.16 lbs
D29ASSL-2	10 1/4"	1 7/8"	18 gauge	1.16 lbs



## Offset extra hard, high tolerance snip, D27AH

- Made for long continuous, straight and curved cuts.
- Case-hardened, high-speed steel edges.
- Right or left cutting versions available.
- HRC up to 68.

	Overall Length	Blade Length	Cutting Capacity (carbon steel)	Approx. Weight
D27AH-BE	10 1/8"	1 7/8"	18 gauge	1.22 lbs
D27AHL-BE	10 1/8"	1 7/8"	18 gauge	1.22 lbs



## Special hard cutting snips, D29SS-2

- High grade steel cutting blades with micro-serrations for slip proof cutting.
- Right or left cutting versions available.
- HRC up to 61.

	Overall Length	Blade Length	Cutting Capacity (carbon steel)	Approx. Weight
D29SS-2	10 1/8"	1 9/16"	18 gauge	1.03 lbs
D29SSL-2	10 1/8"	1 9/16"	18 gauge	1.03 lbs



## Long-nose, multi-purpose snip, D22A

- High grade steel, extra long cutting blades designed for continuous cuts and large radius cuts.
- Angled cutter heads keep hands free from work.
- Available in left cutting version only.
- HRC up to 59.

	Overall Length	Blade Length	Cutting Capacity (carbon steel)	Approx. Weight
D22A	10 1/2"	2 1/2"	18 gauge	1.01 lbs



## Safety strap cutter, D123

- Holds banding tightly during cutting to prevent the banding from springing up.
- Cut steel straps up to 32 x 1 mm (1 1/4" x 1/32") with one hand.
- Ergonomic handle and compound leverage for comfort and ease of use.

	Overall Length	Blade Length	Approx. Weight
D123S-SB	9 7/8"	1 1/2"	1.21 lbs

